



ACTIVE VALUE STRATEGY **FACTSHEET**

INVESTMENT STRATEGY

The strategy seeks to optimize the performance of value stock portfolios by taking stock market volatility (implicit volatility) into account when constructing the portfolio. The underlying stocks of the portfolio are value large cap or blue chip stocks, which are highly profitable, have positive free cashflows, have share buy back programs and reasonable valuations.

Amongst the companies on the shortlist are: Berkshire Hathaway, Alphabet, Amazon, O'Reilly Automotive, Microsoft, JP Morgan, Oracle, Goldman Sachs, Meta, Blackrock, Walmart, Nestle, McDonalds, Intercontinental Exchange, Nike, SAP, Accenture, American Express, Adidas, Munich Re, Johnson & Johnson, Target.

A portfolio of such stocks has a very high probability of generating a positive return over the mid to long-run. However, these stocks fluctuate and this fluctuation can be used to generate additional return. If a stock breaks out on the positive side and if the implied volatility is attractive calls can be sold on a portion of the position, meaning the stock will be sold, if it rises further, over the chosen strike price. A premium is earned for that. If the stock is sold and the stock price falls again, a put can be sold, to buy the stock back, if the price falls below the strike. Again, a premium is earned. Also, if a cycle like this occurs the stock is sold high and bought low, so more return was generated than just having held the stock the entire time.

INVESTMENT STRATEGY

This strategy causes the portfolio to usually consist of a mix of stocks, cash and option positions, making it a multi asset portfolio. However, the portfolio also takes general market volatility and implied volatility of the options markets into account to construct the portfolio. At times, the market volatility can be sufficiently high that having exposure through short put options on a stock has a more interesting risk/return profile than holding the stock outright. So strikes can be chosen to be a bit further out of the money and still the option premium earned can be sufficiently attractive to prefer this option position over an outright investment.

The portfolio will also consist of option positions in the VIX or on the VXX (an ETN on the VIX). Especially when single stock volatility is not so high, but there is cash in the portfolio to serve as collateral for stock market exposure, calls can be written on these products. Again, it earns a yield and will most of the time expire worthless. The risk is a rising volatility level in the market, which cause losses in these positions, but will enable selling puts on single stocks again at much more advantageous price levels. When market volatility is low and single stock volatility is low and a specific stock is at a very attractive price level, starting an uptrend, exposure can also be built up using long single stock calls.

With this strategy, the portfolio “breathes with the market”. With rising markets, risk tends to be reduced by selling calls on stock positions and eventually stocks being called. With falling markets, exposure tends to be built up, by selling puts on value stocks which have fallen in price or selling calls on volatility indices until attractive positions on value stocks open up. Meanwhile, attractive option premiums are continuously being collected, which generally enable a steady, fundamental uptrend in the portfolio.



GENERAL RISK MANAGEMENT

The strategy is subject to single stock risk as well as to market risk. In order to manage single stock risk, it is aimed to hold a wide diversification of stocks. Market risk / market volatility is actually regarded as positive in this strategy. The stocks selected for the portfolio are assumed to perform well over the long-term. Therefore, if the market falls and the stock with it, this is usually regarded as a purchase opportunity. As the strategy makes use of options, especially short options, the exposure to implied volatility levels is probably the major risk. A sharp rise in volatility will cause these positions too lose value over proportionally in the portfolio. Managing this risk is therefore key. Options are therefore carefully staggered by strike price and maturity. Again, rising volatility will be positive in the mid to long-term for this strategy. In order to control risk, the portfolio is turned over only gradually over time, mainly by having options expire in the money, thereby reducing or building equity positions.

INVESTOR RISK PROFILE

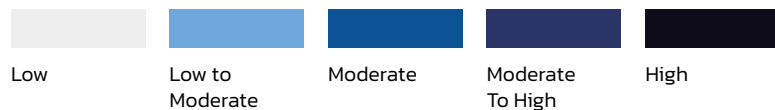
The strategy is suitable for investors looking to achieve long-term growth of capital, accepting a high degree of risk. Especially in times of market distress the strategy is subject to high volatility, which demands certain recovery periods until market volatility has normalized. Investors should therefore be ready, willing and able to accept volatility in their portfolio.



KEY FACTS

Head of Asset Allocation GCP Asset Management

Risk Profile



General Information

Domicile	Cayman Islands
Fund Manager	GCP Asset Management
Fund Administrator	Juristax
Custodian	SBM
Auditor	Bakertilly
Fund Currency	USD
Target Investor	Qualified investor
Minimum Investment	100,000 USD
Lock-In	12 months
Liquidity	Monthly
Valuation	Monthly
Isin -Number	KYG2162E1026

Fee Structure

Maximum initial charged*	5%
Management fee	2%
Performance fee	20%
High Watermark	YES

* This represents the advisory fee which may be charge by your intermediary.

Contact Us

Email: info@citioncapital.com

Website: www.citioncapital.com

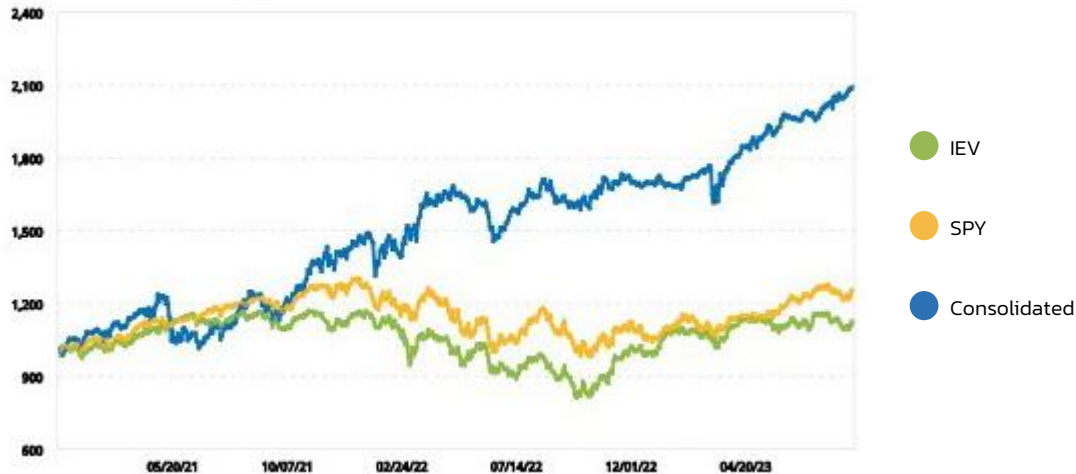


HISTORICAL PERFORMANCE

The historical performance indicates very well the underlying uptrend due to the continuous earnings generated by options writing. As exposure is slowly reduced in rising equity markets and only slowly rebuild in falling equity markets, the correlation to markets is muted.

At the same time, volatility in the strategy can be induced by factors, which are less apparent in the general market performance, such as spikes of implied volatility.

VALUE ADDED MONTHLY INDEX (VAMI)

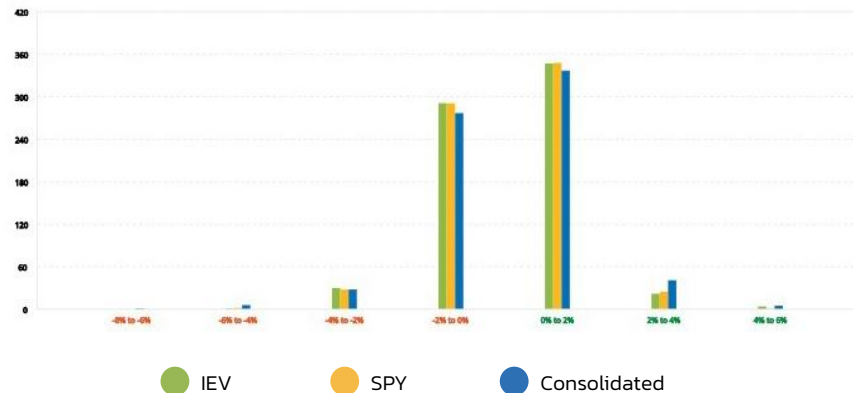


	IEV	SPY	Consolidated
Ending VAMI	1,114.99	1,256.39	2,094.29
Max Drawdown	30.55%	24.50%	13.45%
Peak-To-Valley	11/03/21 - 09/27/22	01/03/22 - 10/12/22	04/28/22 - 06/16/22
Recovery	Ongoing	Ongoing	42 Days
Sharpe Ratio	0.10	0.34	1.21
Sortino Ratio	0.14	0.48	1.73
Standard Deviation	1.18%	1.12%	1.33%
Downside Deviation	0.82%	0.79%	0.93%
Correlation	0.36	0.47	-
β	0.40	0.56	-
α	0.25	0.23	-
Tracking Error	1.43%	1.28%	-
Information Ratio	68.67	65.72	-
Turnover	-	-	183.38%
Mean Return	0.02%	0.04%	0.12%
Positive Periods	373 (53.67%)	374 (53.81%)	383 (55.11%)
Negative Periods	322 (46.33%)	321 (46.19%)	312 (44.89%)

The direct comparison of the strategy to the SPY (SPDR S&P 500) as well as to the IEV (ishares S&P Europe 350 Index) clearly indicate the advantageous risk-return metrics over the period.

The return distribution shows the longer tail of negative distributions of the strategy, indicating that volatility risk can hit the strategy quite hard in short time periods.

DISTRIBUTION OF RETURNS



This document is for professional financial advisers only and is not intended for distribution to private investors. Cition Capital SPC, Cassia Court, Camana Bay, Suite 716, 10 Market Street, Grand Cayman, KY1-9006, Cayman Islands are regulated by the Caymans Islands Monetary Authority. The value of investments, and the income from them, can go down as well as up, and you may not recover the amount of your original investment. Past performance should not be seen as an indication of future performance. Where investments involve exposure to a currency other than that in which the fund is denominated, changes in rates of exchange may cause the value of the investment to go up or down, consequently, investors may receive an amount greater or less than their original investment.

This information is provided for informational purposes only and should not be deemed as investment advice, nor as a recommendation to buy or sell the securities mentioned. Fund shares may not be sold to citizens or residents of any state or jurisdiction where it would be unlawful to offer, solicit an offer, or sell the shares. Before investing, please read the fund prospectus and consult your financial professional. You may obtain a copy of the fund documentation from Cition Capital Corvuss Fund by emailing info@citioncapital.com.